

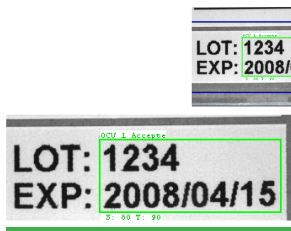
PharmaProof



The Optel Vision **PharmaProof for Package and Components Verification** is an innovative and flexible automated vision system, that offers pharmaceutical manufacturers with complete package component verifications such as: **lot** and **expiration date**, **cap** and **tamper evident seals**, **label orientation** and **presence**, **insert** and **topsert**. Moreover, the system provides extensive inspection of: **labels**, **cartons**, and **case labelers**. The automated vision system augments overall line accuracy and quality assurance to help pharmaceutical manufacturers to **avoid recalls**. The high-performance **PharmaProof reduces: downtime, false-rejects, and rework**, thereby, **increasing line efficiency**.

Optel Vision's **advanced software** and **optical technology** has resulted in an industry leading **OCV/OCR** tool for: **printed** and **embossed codes**, **lot numbers**, **expiration dates**, **label ID numbers** and **DIN/NDC's**, which ensures that the accurate information is printed each and every time. The **PharmaProof** offers on-line **verification** and **grading** of linear bar codes, and 2-D bar codes, such as data matrix, according to ISO/IEC standards.

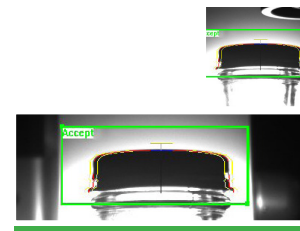
Optel Vision offers complete **integration, training** and **validation**. The system follows GMP guidelines and is FDA 21 CFR Part 11 compliant.



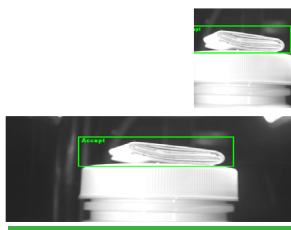
Screen Image
OCV



Screen Image
Label Orientation



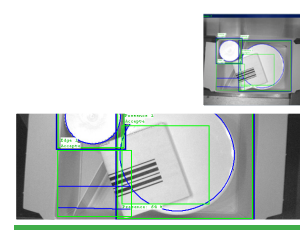
Screen Image
Cap Inspection



Screen Image
Topsert Inspection



Screen Image
Bar Code on Carton



Screen Image
Component Count

Resolution
up to
5 Megapixel





The Optel Vision PharmaProof for Package and Components Verification increases overall line efficiency and quality assurance.

System Features

- Up to 2000 ppm
- 100% on-line inspection
- Quick and easy steps with an unlimited amount of recipe storage
- High accuracy (low false reject rate)
- IO control – stand alone units (PLC integration not required)
- Ethernet base architecture
- No contact with product
- Configurable alarms
- Fully integrated product tracking
- Data management tools – connectivity with ERP/ SCADA system, batch record, and device control
- Tool-less changeovers for a quick and simple software set up
- Compact design

Available Options

- TrackSafe (Line Level Track&Trace Solution)
- IQ, OQ Protocols
- Service Plans
- Multiple HMI

Optel Vision outperforms the competition:

- Custom design applications available
- Project management
- PMMI certified trainers
- 24/7 worldwide quality and reliable customer service
- Turnkey solution



Contact us to find out more on how Optel Vision can meet your company's automated vision inspection needs.

2680 Blvd. du Parc Technologique, Quebec City, QC G1P 4S6 Canada
418.688.0334 ext.: 244 or 1 866.688.0334 • www.optelvision.com