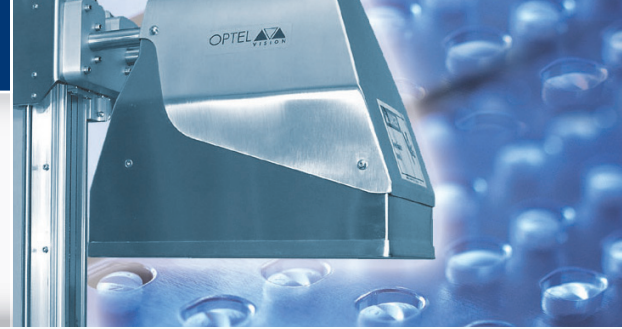


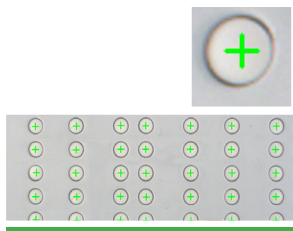
BlisterSafe



The Optel Vision **BlisterSafe** provides verification of tablets and capsules on **any forming material** used on blister packaging lines and increases overall **line efficiency** through a reduction of: downtimes, false-rejects, and rework. The Optel Vision **BlisterSafe** also increases line accuracy and quality assurance to help **avoid costly recalls**.

The Optel Vision **BlisterSafe** distinguishes color tablets and capsules even in similar colored blisters. The automated vision inspection solution is even able to inspect **white tablets on a white background**. The **BlisterSafe** verifies tablets and capsules that are: **broken, deformed, scored, missing and/or misplaced, over/undersized**. In addition, the system supplies **foreign material detection**, and **color quality verification**. It also has the **advanced software technology** for handling all cutting matrices and blister tracking.

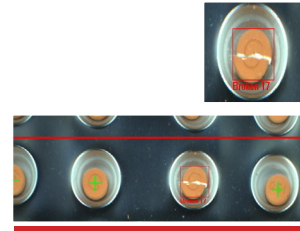
The Optel Vision **BlisterSafe** can be used on any manufactured blister machine or can be installed with minimal downtime on an existing line. Optel Vision offers **complete integration, training and validation**. The system follows GMP guidelines and is FDA 21 CFR Part 11 compliant.



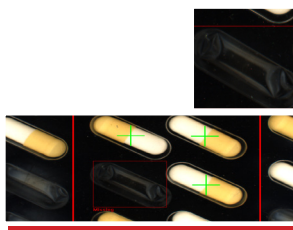
Screen Image
Correct Product



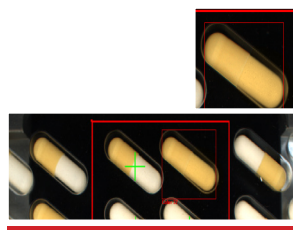
Screen Image
Foreign Object Error



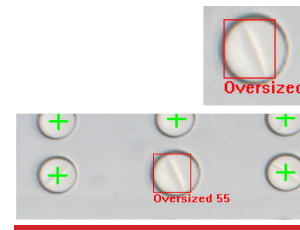
Screen Image
Broken Error



Screen Image
Missing Error



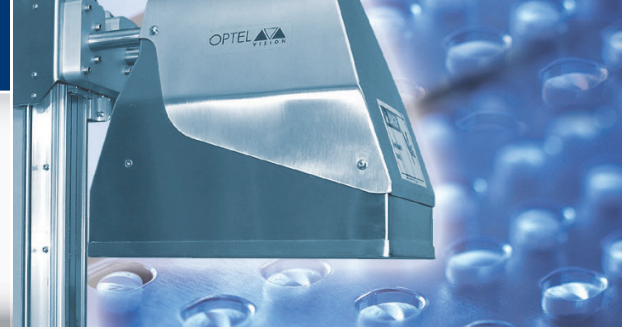
Screen Image
Color Error



Screen Image
Oversize Error

Widths from
100mm up to
300mm





The Optel Vision BlisterSafe offers superior inspection accuracy which guarantees product packaging security.

System Features

- Up to 1000 strokes per minute
- 100% on-line inspection
- Inspection expandability (code inspection, carton bar code verification)
- Quick and easy steps with an unlimited amount of recipe storage
- High accuracy (low false reject rate)
- IO control – stand alone units (PLC integration not required)
- No contact with product
- Configurable alarm when foreign object is detected
- Fully integrated product tracking
- Data management tools – connectivity with ERP/ SCADA system, batch record, and device control
- Tool-less changeovers for a quick and simple software set up
- Compact design

Available Options

- BlisterSafe - Lidding
- Overheated foil detection
- Splice detection
- Pneumatic lift
- Motorized lift
- IQ, OQ protocols
- Service plans

Optel Vision outperforms the competition:

- Custom design applications available
- Project management
- PMMI certified trainers
- 24/7 worldwide quality and reliable customer service
- Turnkey solution



Contact us to find out more on how Optel Vision can meet your company's automated vision inspection needs.

2680 Blvd. du Parc Technologique, Quebec City, QC G1P 4S6 Canada
 418.688.0334 ext.: 244 or 1 866.688.0334 • www.optelvision.com